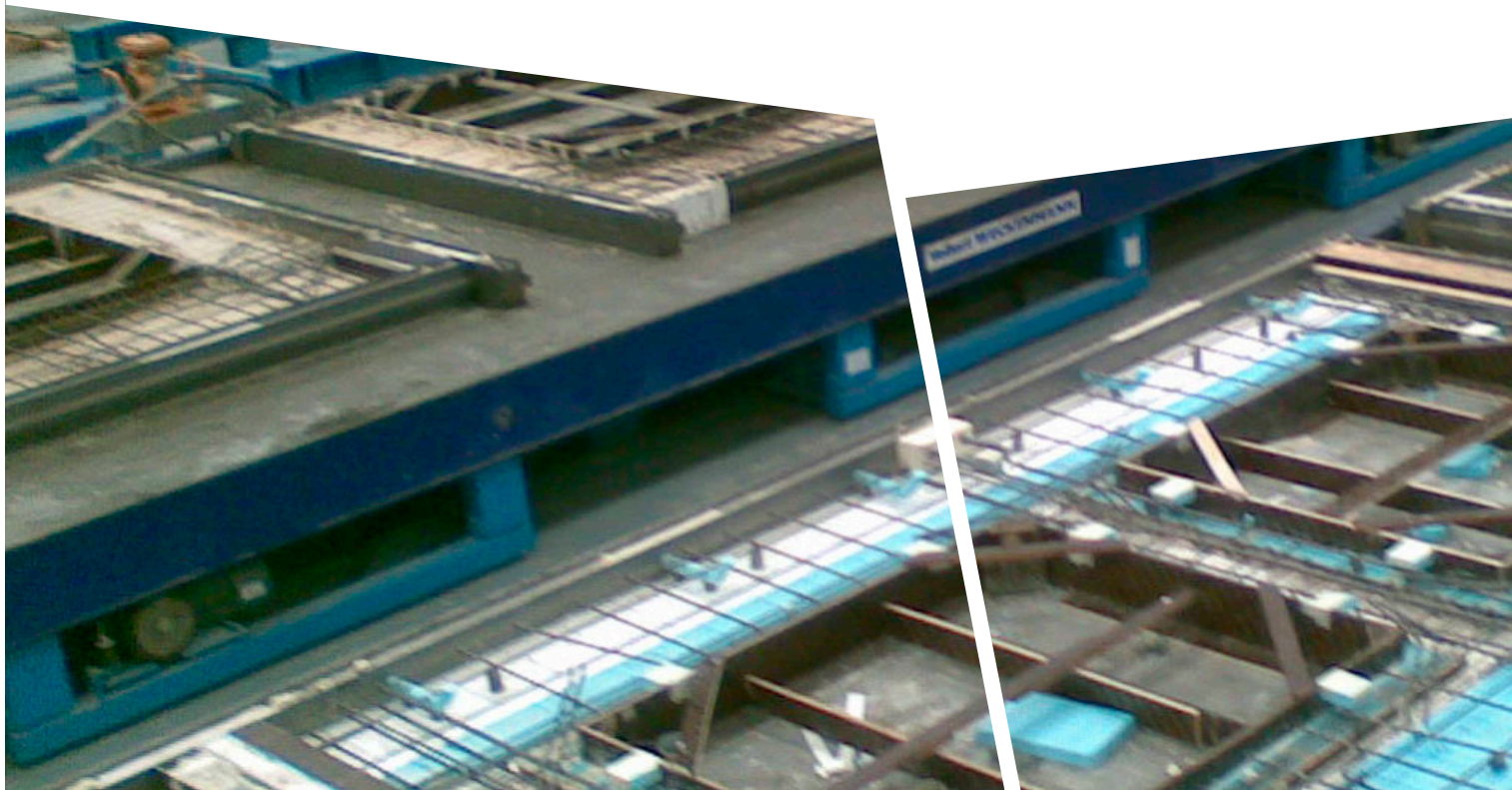


REFERENCE

Precast Concrete Plant for Solid and Double Walls



RAPID BUILDING
WITH PREFAB CONCRETE



Unitechnik
PERFECTION AUTOMATED.



ALABNIAH PRECAST CONCRETE

SAUDI ARABIA

Key data of the facility

23,000 sqm ground floor

Pallet circulation plant for the production of solid walls, sandwich elements, element slabs and double walls

Max. element size: 12m x 4.20m

Production capacity: 110 Pallets, equates to 3,500 sqm per day

Plant equipment:

- Pallet circulation
- Shuttering robot
- Reinforcing manufacture
- Concrete spreader
- Concrete compaction
- Curing chamber, stacker crane
- Turning device
- Unloading stations

Flagship Factory for the Precast Concrete Industry of the Kingdom of Saudi Arabia

Being the official date for start of production of Alabniah Precast Concrete Buildings Factory, the 1st of January 2010 is a date not only marking a new decade but is also a date, when the Saudi Arabian precast concrete industry sees starting off the most advanced and largest factory of its kind in the Kingdom. The factory located in the Second Industrial Area of Dammam is the first of its kind in Saudi Arabia offering the combined advantages of state of the art production technology, high capacity, and a wide product range to supply the market with complete building systems and precast components.

The plant is producing up to 3,500 sqm wall and floor elements per day. What is remarkable about it is that the plant produces individual elements. The buildings are designed with the help of a CAD-system. The CAD-data will be transmitted to the master computer of the production line. On the other hand, the master computer controls the machines the way that the needed elements are produced in exactly correct dimensions and that they are provided in the order as they are needed on site.

Scope of Unitechnik contribution

- Master Computer UniCAM
- Order management
- Pallet loading
- Production control
- Plant visualization
- Work schedules
- Information management

Control engineering:

3 Controls for circulation, shuttering robot, concrete spreader, stacker crane, based on Simatic S7

Distributed design with Profibus

Complex safety concept

Switchgear construction, installation

Commissioning and training

Service contract

Project team:

Design, Project management: Prilhofer

Consulting

Pallet circuit, stacker crane,

turning device: Vollert

Machines, Shutters, Pallets: Weckenmann

CAD: Tekla

and many others

Completion: 2009

Unitechnik Systems GmbH

Fritz-Kotz-Straße 14
51674 Wiehl, Germany

Fon +49 2261 987-0
Fax +49 2261 987-588

logistics@unitechnik.com
www.unitechnik.com

Unitechnik
PERFECTION AUTOMATED.